



RABAT PROCESS - THEMATIC MEETING ON VOLUNTARY RETURN AND REINTEGRATION

**Strengthening return migration governance in the framework
of the EU-IOM Joint Initiative for Migrants Protection and Reintegration**

Yaounde' 24th April 2023

International Organization for Migration – Regional Office for West and Central Africa



IOM
UN MIGRATION

Project funded by the European Union
Project implemented by IOM

EU-IOM JOINT INITIATIVE FOR MIGRANT PROTECTION AND REINTEGRATION IN AFRICA

13 countries covered in West and Central Africa



Duration: 2017 – 2023

6 Pillars:

- (i) capacity building;
- (ii) protection and voluntary return assistance;
- (iii) reintegration support;
- (iv) data collection and analysis;
- (v) awareness raising;
- (vi) community stabilisation

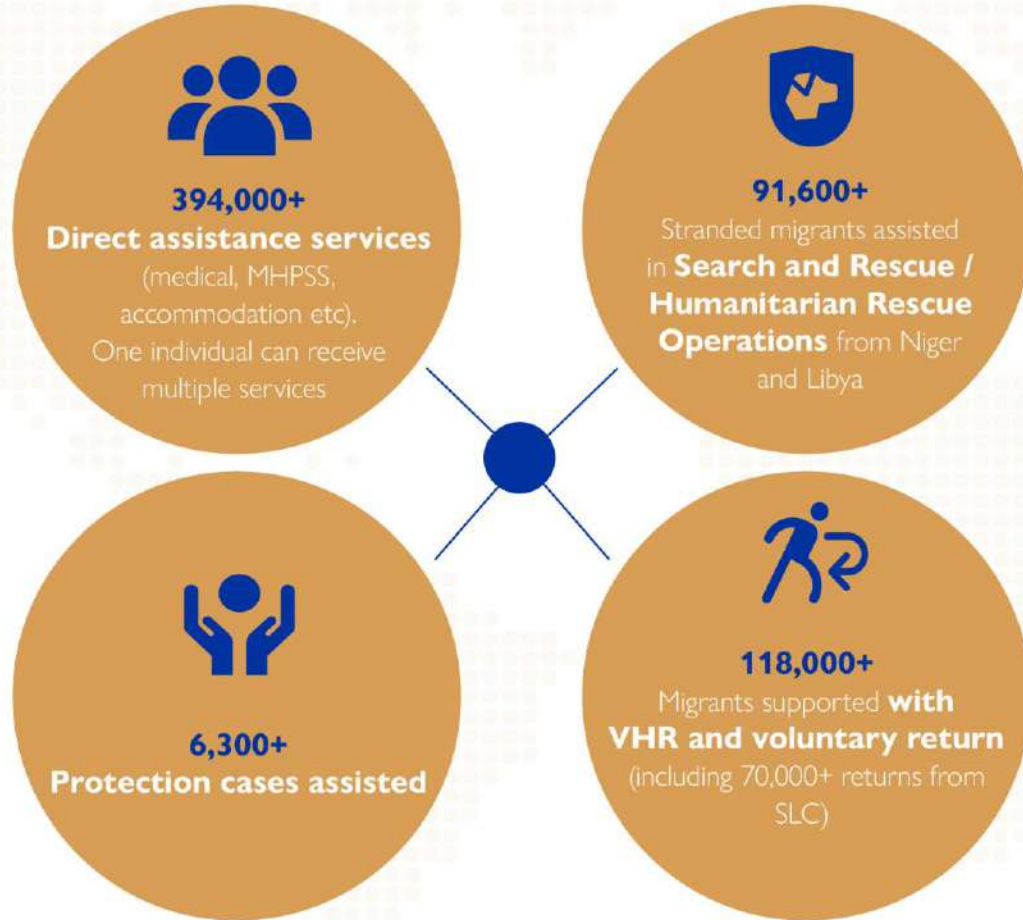


* This map is for illustration purposes only. The boundaries and names shown, and the designations used on this map do not imply official endorsement or acceptance by the International Organization for Migration.

KEY FEATURES OF THE JOINT INITIATIVE

1. Establishing government ownership towards sustainability of migration management programming beyond the JI
2. Providing humanitarian life-saving assistance, return, community stabilization and awareness interventions
3. Piloting an integrated approach to reintegration in partnership with national actors that are on the lead of the reintegration component while seeking referrals with national entities
4. Supporting the regional and route-based dimension of interventions based on regional data collection
5. Ensuring Flexibility following changes in migratory flows and other events such as the COVID-19 pandemic

DIRECT ASSISTANCE – RESCUE AND IDENTIFICATION PROTECTION | IMMEDIATE SUPPORT | RETURN



POST-ARRIVAL AND REINTEGRATION AWARENESS RAISING AND FLOW MONITORING POINTS



106,000+

Post-arrival reception assistance

(incl. reception at the airport, overnight accommodation, cash grant for immediate needs, first medical assistance, assistance with onwards transportation, material assistance)



98,000+

Provided with reintegration assistance

(Reintegration counselling and planning, other reintegration support measures tailored to needs, vulnerabilities and opportunities of each migrant)



32,000+

Psychosocial support

(incl. psychosocial counselling, focus group discussions, family mediation, community mediation)



27,000+

Social support

(incl. social protection schemes, housing, education, medical support, child care, legal services)



500+

Community-based Reintegration

community-based reintegration projects



84%

Surveyed returnees

are satisfied with the reintegration assistance received



17,300+

Awareness Raising

events/activities targeted migrants, potential migrants, & communities to make informed decisions about their migratory journey.



41

Flow Monitoring Points (FMPs)

In place to strengthen data on migratory movements and on needs of vulnerable migrants, aiming to support evidence-based policies and programme design



Knowledge Management

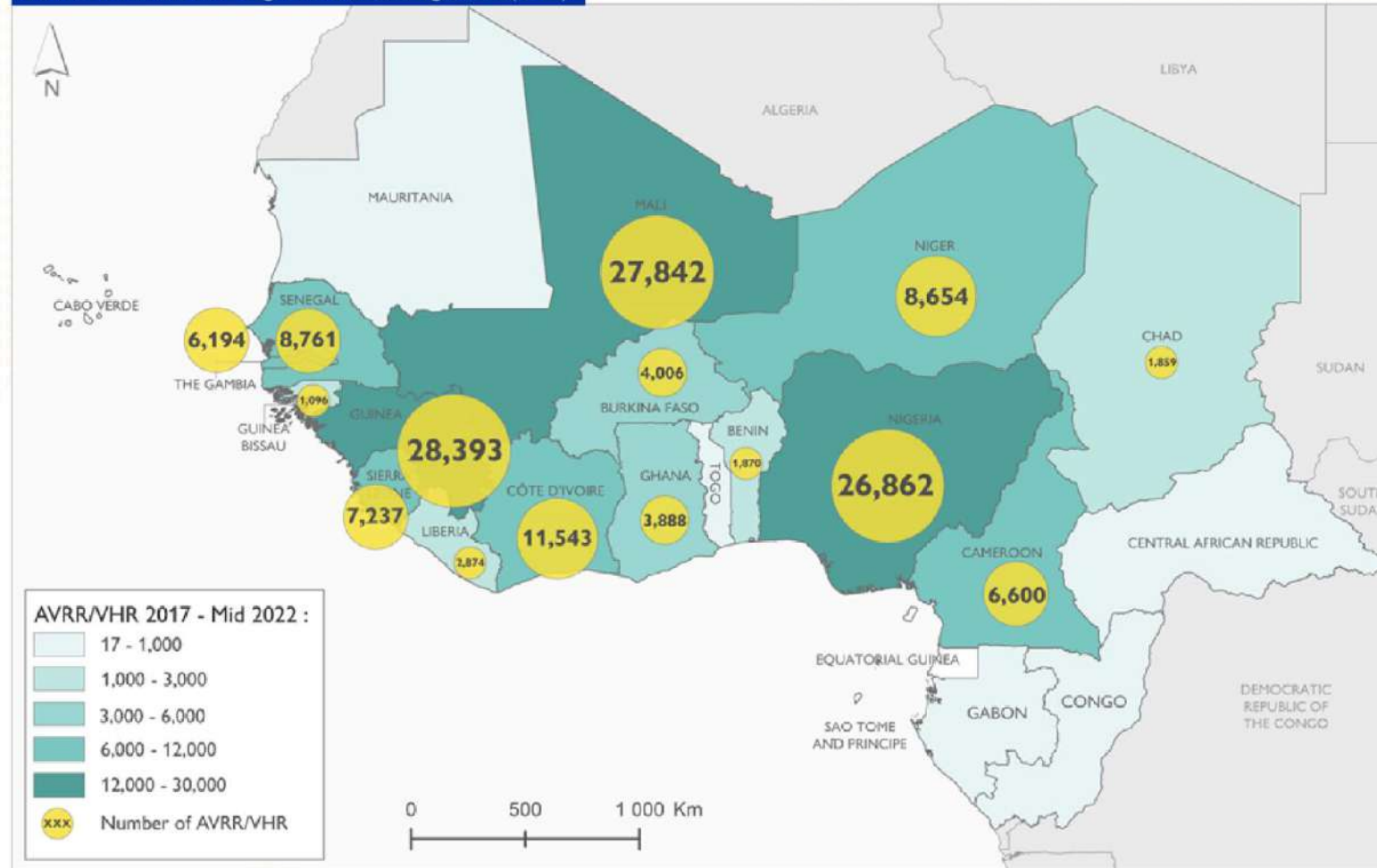
Ex: [Knowledge Management Hub](#),

[Migrant centers toolkit](#),

[Coronawestafrica.info](#)

AVRR AND VHR TO WEST AND CENTRAL AFRICA 2017 - JUNE 2022

Source: International Organization for Migration (IOM)



GOVERNANCE AND CAPACITY DEVELOPMENT



- Migration Governance
- Coordination Structures
- Migration Policies and Action Plans

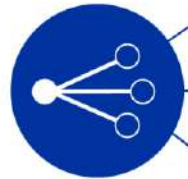


35+

Multi stakeholder **working groups, technical committees and referral networks** supported



Countries have SOPs for the provision of return and reintegration assistance



- Referral Mechanisms
- SOPs
- NRM and Networks



200+

Partners signed an **agreement for referral** or support provide reintegration assistance

Focus areas of capacity development:

- Return, reintegration, protection, mhpps, awr, data etc.
- Project management, M&E
- Migration policy & national action plan reviews in line with the GCM



- Capacity Building
- Technical Capacity Development - Trainings and technical advice
- Operational Capacity Development - Consular Visits
- Material Support



150+

Capacity building activities - Building ownership, strengthening migration governance



5500+

Stakeholders participated in **capacity building** and/or **operational support training**



19

Consular missions facilitated



36

Migrant Resource and/or Response Centres (MRRCs/MRCs) established or strengthened

GOVERNANCE AND OWNERSHIP OF RETURN AND REINTEGRATION

Migration Governance

- Key **policy and legal frameworks on migration** and mainstreaming migration considerations into other policy areas
- **Government lead role in migration and project governance coordination structures including regional/state level**
- **Governments' lead role in enhancing operational cooperation and promote broad multi-stakeholder partnerships**
- **Coordination Platforms on specific topics**
- **Granting and/or facilitating of authorizations/access**

Resource Allocation

- **Reception and post-arrival assistance** of returnees (food, transportation, phones)
- **Migrants' centers** (premises, running costs, staff)
- **Reintegration support** (Training for returnees, in kind)

Direct Support – service delivery and engagement

- **Reception and post-arrival assistance**
- **Job Counselling**
- **Business skills trainings**
- **Case Management or Technical Expertise**
- **Monitoring and Evaluation**

Thank you!